

"STILL LIFE" WINNERS, with the proud photographers, I.K. Yang (2nd place, and Photographer of the Month), Bien Bautista (1st place) and Rudy de Leon (3rd place).

BAUTISTA AND YANG WIN "STILL LIFE" WHILE FAJARDO AND MARCOS TOP LIAN-CALATAGAN ON-THE-SPOT

Safety pins and eggs. An Imaginative bunch of gold-colored safety pins spilling out of a white line-frame on a field of solid black. This was Bien Bautista's entry which was crowned "Picture of the Month" for May's "Still Life" color print competition held during the club's regular meeting last May 7, 1984, at the Skytop of the Hotel InterContinental Manila. As one of the judges said, the pictures she found attractive had a little touch of humor.

As in a similar contest a couple of years back, eggs did it again for I.K. Yang, who has emerged as the

club's undisputed king of eggs, the club's "eggspert," so to speak. A picture of a broken egg brimming with egg yolk surrounded by neatly arranged whole eggs won 2nd place, and together with a tabletop of colorful M & M candies, garnered for I.K. the title of "Photographer of the Month."

In another repeat, a second edition of Rudy de Leon's paint can with paint brush on black won 3rd place. Following I.K., however, for best totals for two entries were Sonny Cruz and Pros Madamba.

The judges for the "Still Life" competition were well-known

painter Felicitas "Phyllis" Zaballero, professional photographer Benjamin A. Laxina who has illustrated countless books ranging from medical tomes to coffee table books on art and antiques, and book production specialist Corazon Alvina who is responsible for many of the recent series of coffee table books on various aspects of Philippine life and culture. These judges were relatively lenient "flunking" only three out of 70 entries, for a 96% qualifying rate.

Held in the same evening was the judging for the Lian-Calatagan on-the-spot color slide competition of last

(Continued on page 3)



LIAN-CALATAGAN OTS WINNERS: Sonny Cruz (2nd Best Picture and 2nd Best Photographer), Ramon Marcos (Best Photographer and 3rd Best Picture) and Judes Echauz (3rd Best Picture). Abroad and not in photo: Ernie Fajardo (Best Picture and 3rd Best Photographer).

NEXT REGULAR MEETING

When : Monday, June 4, 1984
6:30 PM

Where : Hotel InterContinental
Manila

Contest : Portrait of Individual
(Black and White)

Deadline for entries:
Monday, June 4, 1984,
1:00 PM at club office
at 1782 Nicanor Gar-
cia St., Makati, Metro
Manila

RESULTS OF "STILL LIFE" COLOR PRINT COMPETITION May 7, 1984

RESULTS OF LIAN-CALATAGAN ON-THE-SPOT SLIDE COMPETITION April 7-8, 1984 (Judged May 7, 1984)

| Rank | Photographer | Qualifying Points | Total Point | Rank | Photographer | Qualifying Points | Total Point |
|------|--------------------|-------------------|-------------|------|--------------------|-------------------|-------------|
| 1 | YANG, I.K. | 4.6500 4.0833 | 8.7333 | 1 | MARCOS, R. | 4.0266 3.9166 | 7.9432 |
| 2 | CRUZ, M. | 4.3266 4.2166 | 8.5432 | 2 | CRUZ, M. | 4.0300 3.8333 | 7.8633 |
| 3 | MADAMBA, P. | 4.2500 4.2166 | 8.4666 | 3 | FAJARDO, E. | 4.1666 3.5666 | 7.7332 |
| 4 | BAUTISTA, B. | 4.6833 3.7500 | 8.4333 | 4 | ECHAUZ, E. | 4.0266 3.6966 | 7.7232 |
| 5 | ESCALER, F. | 4.2666 4.1566 | 8.4232 | 5 | SARTE, E. | 3.8400 3.8333 | 7.6733 |
| 6 | MARCOS, R. | 4.2733 4.1166 | 8.3899 | 6 | RIVERA, F. | 3.6900 3.6700 | 7.3600 |
| 7 | SANTOS, E. | 4.2266 3.9600 | 8.1866 | 7 | REIDENBACH, R. | 3.8500 3.5000 | 7.3500 |
| 8 | MIRANDA, M. | 4.5333 3.6000 | 8.1333 | 8 | DE LEON, R. | 3.6966 3.5300 | 7.2266 |
| 9 | ONG, W. | 3.3833 3.5833 | 7.9666 | 9 | YANG, I.K. | 3.6666 3.5266 | 7.1932 |
| 10 | ECHAUZ, E. | 4.0166 3.9166 | 7.9332 | 10 | PATERNO, R. | 3.6666 3.5000 | 7.1666 |
| 11 | ABAD, R. | 4.0666 3.8400 | 7.9066 | 11 | LAZO, G. | 3.7733 3.3633 | 7.1366 |
| 12 | DE LEON, R. | 4.5500 3.2666 | 7.8166 | 12 | CRUZ, J. | 3.6733 3.3633 | 7.0366 |
| 13 | ZOBEL DE AYALA, J. | 4.0833 3.6166 | 7.6999 | 13 | JAZMINES, I. | 3.6966 3.3333 | 7.0299 |
| 14 | FONG, P. | 3.9000 3.6833 | 7.5833 | 14 | BAUTISTA, B. | 3.7666 3.1666 | 6.9332 |
| 15 | PATERNO, R. | 4.0000 3.5666 | 7.5666 | 15 | CASTILLO, R. | 3.8633 3.0000 | 6.8633 |
| 16 | RIVERA, F. | 3.7666 3.6500 | 7.4166 | 15 | VILLANUEVA, P. | 3.5000 3.3633 | 6.8633 |
| 17 | FERNANDEZ, J. | 3.9666 3.4366 | 7.4032 | 16 | FONG, P. | 3.3633 3.3600 | 6.7233 |
| 18 | CASTRO, A. | 3.8000 3.5666 | 7.3666 | 17 | FERNANDEZ, J. | 3.5033 3.1866 | 6.6899 |
| 19 | JAZMINES, I. | 3.7000 3.6000 | 7.3000 | 18 | ARGUELLES, L. | 3.6666 3.0066 | 6.6732 |
| 20 | MALOLES, L. | 3.7100 3.4666 | 7.1766 | 19 | CASTRO, A. | 3.1966 3.0200 | 6.2166 |
| 21 | CASTILLO, R. | 3.6500 3.4000 | 7.0500 | 20 | DAVOCOL, E. | 3.8633 | 3.8633 |
| 22 | LAZO, G. | 3.7166 3.3166 | 7.0332 | 21 | MALOLES, L. | 3.5300 | 3.5300 |
| 23 | ASIS, R. | 3.6066 3.4000 | 7.0066 | 22 | CAMARILLO, E. | 3.5233 | 3.5233 |
| 24 | MILLS, V. | 3.5833 3.2600 | 6.8433 | 23 | SUGAY, R. | 3.3633 | 3.3633 |
| 25 | SYCIP, A. | 3.5166 3.2400 | 6.7566 | 24 | FESTEJO, J. | 3.1966 | 3.1966 |
| | VILLANUEVA, P. | 3.6066 3.1500 | 6.7566 | 24 | TROFEO, R. | 3.1966 | 3.1966 |
| 26 | FAJARDO, E. | 3.5666 3.1600 | 6.7266 | 25 | ABAD, R. | 3.1933 | 3.1933 |
| 27 | ABIVA, L. | 3.3333 3.3066 | 6.6399 | 26 | ZOBEL DE AYALA, J. | 3.1666 | 3.1666 |
| 28 | PANTANGCO, E. | 3.4000 3.1633 | 6.5633 | 27 | ESGUERRA, O. | 3.0166 | 3.0166 |
| 29 | VENTANILLA, D. | 3.3500 3.0766 | 6.4266 | | | | |
| 30 | CAMARILLO, E. | 3.1666 3.1166 | 6.2832 | | | | |
| 31 | TROFEO, R. | 3.1333 3.1066 | 6.2399 | | | | |
| 32 | DAVOCOL, E. | 4.3666 | 4.3666 | | | | |
| 33 | REIDENBACH, R. | 3.4833 | 3.4833 | | | | |
| 34 | ASEDILLO, R. | 3.1433 | 3.1433 | | | | |

COMING SOON...

July 8, 1984: 3rd OTS: Rizal Park and Roxas Boulevard to Baclaran
August 19, 1984: 56th Anniversary (suggested theme for costumes and group presentations — Broadway musicals)



The CCP BOARD OF DIRECTORS pauses during its regular monthly meeting last May 11, 1984, at the Light House, Meralco, to celebrate Past President Marcos' birthday.

YANG AND BAUTISTA WIN... *(from page 1)*

April 7-8, 1984. Most appropriately, the host of the OTS, Ramon Marcos, emerged as the "Best Photographer" for the occasion for his two unusually lit slides of a fisherman hanging up his net and the same fisherman walking away on a sandy beach at Talim Point. The first slide also tied for 3rd place among the entries with Judes Echauz' rocky shoreline in the afterglow of sunset.

"Best Picture" for the OTS was won by a new version of a worm's eye ultra-wide-angle view of a field covered by dead leaves with a cow in the wooded background submitted by President Ernie Fajardo who also harvested the third best total for that contest. Second best picture as well as second best total for two entries was won by Sonny Cruz.

The judges for the OTS were well-known art patron, writer, columnist, former Secretary of Education Alejandro Roces, Jose

Cobilla, Jr., a professional photographer connected with the Ministry of Tourism and the Central Bank, and Jean Mallet, manager of the Manila OBU branch of the Banque Indo-Suez and an amateur photographer. This panel of judges was relatively stricter than that for "Still Life." They "flunked" 23% of the entries, or 15 out of the 64 entries.

In the overall Shell Trophy race, there were a few changes below the fourth spot. Bien Bautista and Pros Madamba have entered the top ten, dislodging Dik Trofeo and Ernie Fajardo. Bobby Paterno continues to cling tenaciously to the top position for the fifth month now, with Judes Echauz, Ely Santos, Ramon Marcos, Sonny Cruz, Jaime Zobel, Francis Rivera, Bien Bautista, Sonny Camarillo and Pros Madamba dogging one another's heels in that order.

THE WINNING PHOTOS



"OUT OF FRAME"
by Bien S. Bautista
PICTURE OF THE MONTH
STILL LIFE (Color Print)

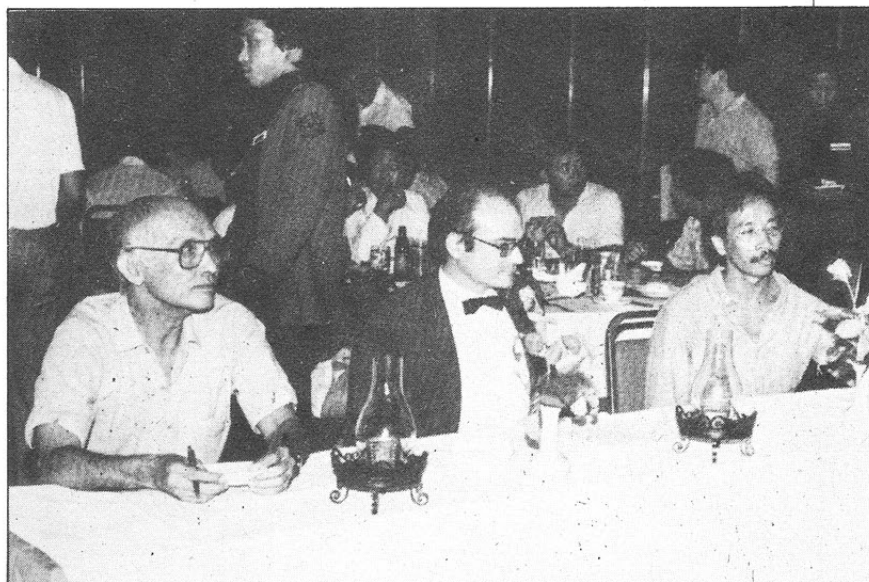


"CARPET OF LEAVES" by Ernesto I. Fajardo
BEST PICTURE FOR LIAN-CALATAGAN ON-THE-SPOT (Color Slide)

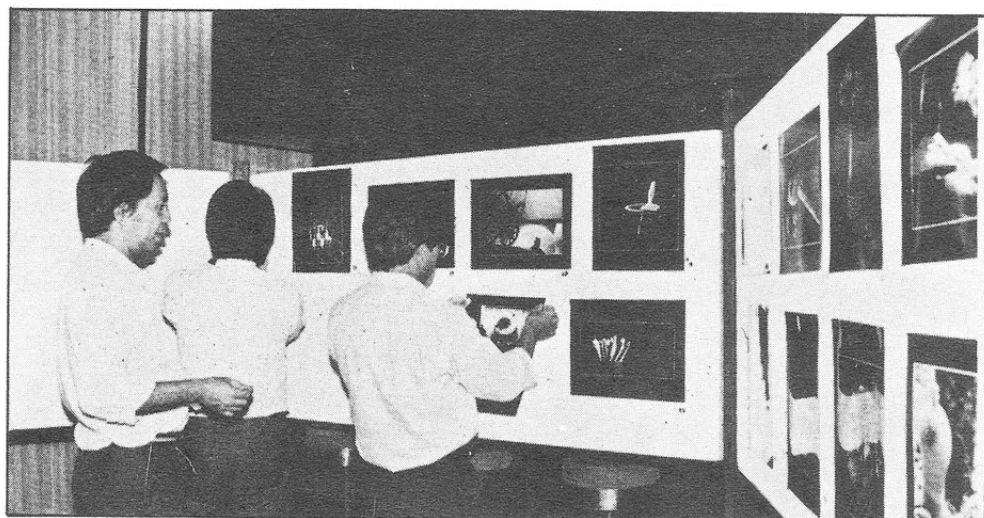
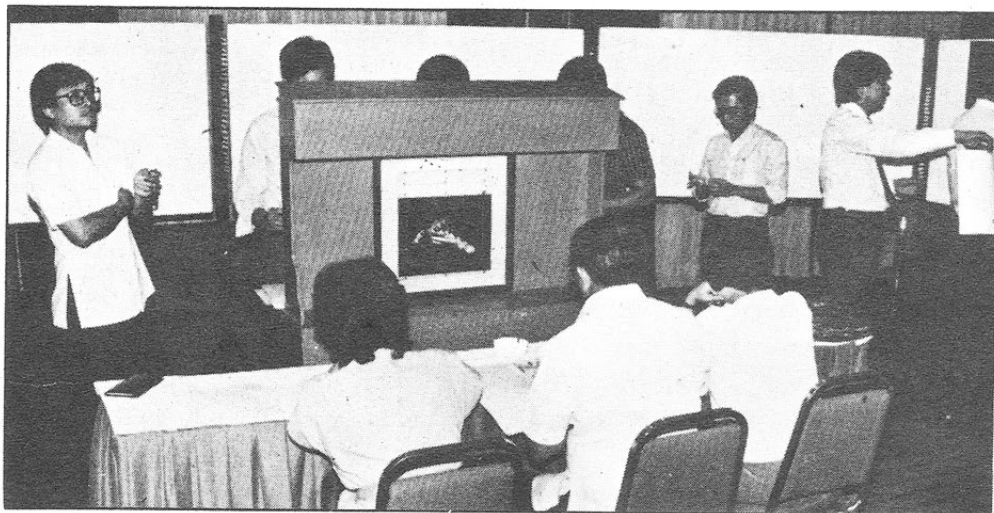
REGULAR MONTHLY MEETING Hotel Intercontinental Manila May 7, 1984



Briefing "Still Life" Judges Laxina, Alvina and Zaballero



OTS Judges Roces, Mallet and Cobilla



REGULAR MONTHLY MEETING



SHELL TROPHY STANDINGS as of May 1984

| Rank | Photographer | Total Point |
|------|--------------------|-------------|
| 1 | PATERNO, R. | 40.5529 |
| 2 | ECHAUZ, E. | 39.6097 |
| 3 | SANTOS, E. | 38.8464 |
| 4 | MARCOS, R. | 38.1397 |
| 5 | CRUZ, M. | 36.8428 |
| 6 | ZOBEL DE AYALA, J. | 36.1998 |
| 7 | RIVERA, F. | 35.4364 |
| 8 | BAUTISTA, B. | 33.9531 |
| 9 | CAMARILLO, E. | 33.7263 |
| 10 | MADAMBA, P. | 33.2363 |
| 11 | LAZO, G. | 33.1563 |
| 12 | FAJARDO, E. | 33.0397 |
| 13 | CASTILLO, R. | 32.9763 |
| 14 | ABIVA, L. | 32.8729 |
| 15 | FERNANDEZ, J. | 32.7062 |
| 16 | TROFEO, R. | 32.6563 |
| 17 | DE LEON, R. | 32.5665 |
| 18 | VILLANUEVA, P. | 31.6464 |
| 19 | ESCALER, F. | 31.4630 |
| 20 | MALOLES, L. | 30.4931 |
| 21 | VENTANILLA, D. | 29.8264 |
| 22 | FONG, P. | 28.9031 |
| 23 | ABAD, R. | 28.7364 |
| 24 | ASIS, R. | 28.4130 |
| 25 | YANG, I.K. | 28.2331 |
| 26 | MILLS, V. | 27.8131 |
| 27 | MIRANDA, M. | 26.4831 |
| 28 | CASTRO, A. | 25.2031 |
| 29 | UNSON, E. | 24.8665 |
| 30 | REIDENBACH, R. | 24.7264 |
| 31 | ASEDILLO, R. | 24.6131 |
| 32 | JAZMINES, I. | 22.5332 |
| 33 | SYCIP, R. | 22.5331 |
| 34 | DAVOCOL, E. | 22.4498 |
| 35 | FERNANDEZ, Z. | 20.5165 |
| 36 | SYCIP, A. | 20.4965 |
| 37 | PANTANGCO, E. | 19.8099 |
| 38 | FESTEJO, J. | 17.1932 |
| 39 | LIZARDO, J. | 14.8098 |
| 40 | DE LA VEGA, B. | 14.0532 |
| 41 | SAN JUAN, P. | 13.8832 |
| 42 | BLACK, J. | 12.2565 |
| 43 | VALENCIANO, V. | 12.1600 |
| 44 | ONG, W. | 11.4666 |
| 45 | STA. MARIA, F. | 11.1799 |
| 46 | ESGUERRA, O. | 11.1165 |
| 47 | ZOSA, E. | 10.4000 |
| 48 | DE LA MERCED, N. | 10.3500 |
| 49 | BLANCO, M. | 9.8266 |
| 50 | SARTE, E. | 8.5999 |
| 51 | ARGUELLES, L. | 7.8833 |
| 52 | SUGAY, R. | 7.7333 |
| 53 | ALGER, J. | 7.3000 |
| 54 | PALMA GIL, B. | 7.2999 |
| 55 | DE ARMAS, G. | 7.2233 |
| 56 | LACUESTA, A. | 3.6333 |
| 57 | ARRIOLA, E. | 3.4833 |
| 58 | DE LOS ANGELES, E. | 3.3833 |
| 59 | BILLOTE, J. | 3.2433 |
| 60 | BURGOS, B. | 3.1333 |

| CURRENT STANDINGS COLOR SLIDE PHOTOGRAPHER OF THE YEAR (as of May 1984) | | | CURRENT STANDINGS ON-THE-SPOT PHOTOGRAPHER OF THE YEAR (as of May 1984) | | | CURRENT STANDINGS COLOR PRINT PHOTOGRAPHER OF THE YEAR (as of May 1984) | | | | | | | | | | |
|---|--------------------|-------------|---|--------------------|-------------|--|--------------------|-------------|----------|--------|-----------|----------|--------|--------|-------|-------------------|
| Rank | Photographer | Total Point | Rank | Photographer | Total Point | Rank | Photographer | Total Point | | | | | | | | |
| 1 | PATERNO, R. | 16.9498 | 1 | ECHAUZ, E. | 15.9398 | 1 | MARCOS, R. | 16.9565 | | | | | | | | |
| 2 | ECHAUZ, E. | 15.1999 | 2 | RIVERA, F. | 15.7933 | 2 | CRUZ, M. | 16.5098 | | | | | | | | |
| 3 | SANTOS, E. | 15.1166 | 3 | CRUZ, M. | 15.0966 | 3 | ESCALER, F. | 16.0898 | | | | | | | | |
| 4 | MARCOS, R. | 14.2832 | 4 | REIDENBACH, R. | 14.9666 | 4 | ECHAUZ, E. | 15.9332 | | | | | | | | |
| 5 | MADAMBA, P. | 13.9998 | 5 | FAJARDO, E. | 14.8998 | 5 | PATERNO, R. | 15.5332 | | | | | | | | |
| 6 | UNSON, E. | 13.9832 | 6 | LAZO, G. | 14.7032 | 6 | BAUTISTA, B. | 15.3666 | | | | | | | | |
| 7 | LAZO, G. | 13.8332 | 7 | PATERNO, R. | 14.2499 | 7 | MIRANDA, M. | 15.3332 | | | | | | | | |
| 8 | ABIVA, L. | 13.4832 | 8 | YANG, I.K. | 13.9431 | 8 | SANTOS, E. | 15.2866 | | | | | | | | |
| 9 | CRUZ, M. | 13.2498 | 9 | VILLANUEVA, P. | 13.5966 | 9 | DE LEON, R. | 15.2499 | | | | | | | | |
| 10 | ZOBEL DE AYALA, J. | 13.0000 | 10 | FERNANDEZ, J. | 13.5565 | 10 | ZOBEL DE AYALA, J. | 14.9332 | | | | | | | | |
| 11 | FERNANDEZ, Z. | 12.5832 | 11 | FONG, P. | 13.1233 | 11 | CASTILLO, R. | 14.8499 | | | | | | | | |
| 12 | CAMARILLO, E. | 12.3833 | 12 | DAVOCOL, E. | 11.6966 | 12 | MALOLES, L. | 14.7432 | | | | | | | | |
| 13 | RIVERA, F. | 12.2833 | 13 | DE LEON, R. | 11.1599 | 13 | RIVERA, F. | 14.6832 | | | | | | | | |
| 14 | FAJARDO, E. | 12.2132 | 14 | CASTILLO, R. | 11.1133 | 14 | FERNANDEZ, J. | 14.6365 | | | | | | | | |
| 15 | TROFEO, R. | 11.9166 | 15 | JAZMINES, I. | 11.0799 | 15 | FONG, P. | 14.5832 | | | | | | | | |
| 16 | VENTANILLA, D. | 11.5666 | 16 | FESTEJO, J. | 10.8966 | 16 | ABAD, R. | 14.4732 | | | | | | | | |
| 17 | ASIS, R. | 11.3832 | 17 | BAUTISTA, B. | 10.6665 | 17 | CAMARILLO, E. | 13.9831 | | | | | | | | |
| 18 | BAUTISTA, B. | 11.3666 | 18 | CAMARILLO, E. | 10.6233 | 18 | FAJARDO, E. | 13.6599 | | | | | | | | |
| | YANG, I.K. | 11.3666 | 19 | CRUZ, J. | 10.4699 | 19 | SYCIP, A. | 13.6232 | | | | | | | | |
| 19 | ESCALER, F. | 11.3332 | 20 | SUGAY, R. | 9.8966 | 20 | VILLANUEVA, P. | 13.3232 | | | | | | | | |
| 20 | DAVOCOL, E. | 11.3166 | 21 | CASTRO, A. | 9.2166 | 21 | TROFEO, R. | 13.1398 | | | | | | | | |
| 21 | MILLS, V. | 11.1832 | 22 | ABAD, R. | 9.2099 | 22 | ABIVA, L. | 12.7065 | | | | | | | | |
| 22 | MIRANDA, M. | 11.1499 | 23 | SYCIP, R. | 8.4333 | 23 | MADAMBA, P. | 11.7332 | | | | | | | | |
| 23 | VILLANUEVA, P. | 11.1499 | 24 | MARCOS, R. | 7.9432 | 24 | DAVOCOL, E. | 11.1332 | | | | | | | | |
| 24 | FERNANDEZ, J. | 11.0165 | 25 | PANTANGCO, E. | 7.8499 | 25 | LAZO, G. | 10.5332 | | | | | | | | |
| 25 | CASTILLO, R. | 10.9832 | 26 | SARTE, E. | 7.6733 | 26 | ASEDILLO, R. | 10.3099 | | | | | | | | |
| 26 | CASTRO, A. | 10.7333 | 27 | SANTOS, E. | 7.4999 | 27 | ASIS, R. | 10.1399 | | | | | | | | |
| 27 | DE LA MERCED, N. | 10.3500 | 28 | MIRANDA, M. | 7.4333 | 28 | MILLS, V. | 10.0099 | | | | | | | | |
| 28 | SAN JUAN, P. | 10.2499 | 29 | UNSON, E. | 7.4166 | 29 | VENTANILLA, D. | 9.9599 | | | | | | | | |
| 29 | FESTEJO, J. | 10.0333 | 30 | ZOSA, E. | 7.3166 | 30 | REIDENBACH, R. | 9.6499 | | | | | | | | |
| 30 | SARTE, E. | 8.5999 | 31 | SAN JUAN, P. | 7.2999 | 31 | YANG, I.K. | 8.7333 | | | | | | | | |
| 31 | BLACK, J. | 8.2332 | 32 | ASIS, R. | 7.1832 | 32 | ONG, W. | 7.9666 | | | | | | | | |
| 32 | STA. MARIA, F. | 8.1666 | 33 | VENTANILLA, D. | 7.1666 | 33 | FERNANDEZ, Z. | 7.9333 | | | | | | | | |
| 33 | DE LEON, R. | 8.0666 | 34 | VALENCIANO, V. | 7.1500 | 34 | CASTRO, A. | 7.3666 | | | | | | | | |
| 34 | LIZARDO, J. | 8.0499 | 35 | ABIVA, L. | 7.1333 | 35 | ALGER, J. | 7.3000 | | | | | | | | |
| 35 | ARGUELLES, L. | 7.8833 | 36 | MILLS, V. | 7.0833 | | JAZMINES, I. | 7.3000 | | | | | | | | |
| 36 | SUGAY, R. | 7.7333 | 37 | ESCALER, F. | 6.9166 | 36 | SYCIP, R. | 7.2666 | | | | | | | | |
| 37 | MALOLES, L. | 7.6833 | 38 | LIZARDO, J. | 6.8833 | 37 | PANTANGCO, E. | 6.5633 | | | | | | | | |
| 38 | REIDENBACH, R. | 7.4499 | 39 | BLANCO, M. | 6.7333 | 38 | SAN JUAN, P. | 3.6333 | | | | | | | | |
| 39 | PALMA GIL, B. | 7.2999 | 40 | ARGUELLES, L. | 6.6732 | 39 | ZOSA, E. | 3.5666 | | | | | | | | |
| 40 | FONG, P. | 7.2666 | 41 | MADAMBA, P. | 6.2499 | 40 | UNSON, E. | 3.5000 | | | | | | | | |
| 41 | ASEDILLO, R. | 7.2333 | 42 | SYCIP, A. | 6.1333 | <div>1984 MEMBERSHIP DUES</div> <table><tr><td>Due Date</td><td>Amount</td></tr><tr><td>January 1</td><td>₱ 750.00</td></tr><tr><td>June 1</td><td>750.00</td></tr><tr><td>TOTAL</td><td><u>₱ 1,500.00</u></td></tr></table> | | | Due Date | Amount | January 1 | ₱ 750.00 | June 1 | 750.00 | TOTAL | <u>₱ 1,500.00</u> |
| Due Date | Amount | | | | | | | | | | | | | | | |
| January 1 | ₱ 750.00 | | | | | | | | | | | | | | | |
| June 1 | 750.00 | | | | | | | | | | | | | | | |
| TOTAL | <u>₱ 1,500.00</u> | | | | | | | | | | | | | | | |
| 42 | ABAD, R. | 7.1499 | 43 | MALOLES, L. | 3.5300 | | | | | | | | | | | |
| 43 | JAZMINES, I. | 7.0499 | 44 | TROFEO, R. | 3.1966 | | | | | | | | | | | |
| 44 | DE LA VEGA, B. | 6.9333 | 45 | ZOBEL DE AYALA, J. | 3.1666 | | | | | | | | | | | |
| 45 | ZOSA, E. | 6.9000 | 46 | ESGUERRA, O. | 3.0166 | <div><div>Camera Club of the Philippines</div><div>VIEWFINDER</div><div>1782 Nicanor Garcia St., Makati, M. Mla. • Tel. - 86-37-97</div><div>Member: PHOTOGRAPHIC SOCIETY OF AMERICA (PSA)</div><div>CLUB BULLETIN COMMITTEE</div><div>Roberto M. Paterno, <i>Chairman</i></div><div>Luis O. Abiva, Jr. • Emil Davocol, <i>Creative Director</i> • Jose Ma. Fernandez</div><div>Felice Sta. Maria • Francis M. Rivera • Jaime Zobel de Ayala</div><div>Photos this issue by Luis O. Abiva, Jr. • Bien Bautista</div></div> | | | | | | | | | | |
| 46 | SYCIP, R. | 6.7666 | | | | | | | | | | | | | | |
| 47 | PANTANGCO, E. | 6.7166 | | | | | | | | | | | | | | |
| 48 | LACUESTA, A. | 3.6333 | | | | | | | | | | | | | | |
| 49 | SYCIP, A. | 3.5833 | | | | | | | | | | | | | | |
| 50 | ESGUERRA, O. | 3.5166 | | | | | | | | | | | | | | |
| 51 | ONG, W. | 3.5000 | | | | | | | | | | | | | | |
| 52 | VALENCIANO, V. | 3.5000 | | | | | | | | | | | | | | |
| 53 | ARRIOLA, E. | 3.4833 | | | | | | | | | | | | | | |
| 54 | DE LOS ANGELES, E. | 3.3833 | | | | | | | | | | | | | | |
| 55 | DE ARMAS, G. | 3.3000 | | | | | | | | | | | | | | |
| 56 | BURGOS, B. | 3.1333 | | | | | | | | | | | | | | |
| 57 | BLANCO, M. | 3.0333 | | | | | | | | | | | | | | |

MONTH OF **MAY WINNERS**

I.K. YANG

PHOTOGRAPHER
OF THE MONTH - MAY
'STILL LIFE'



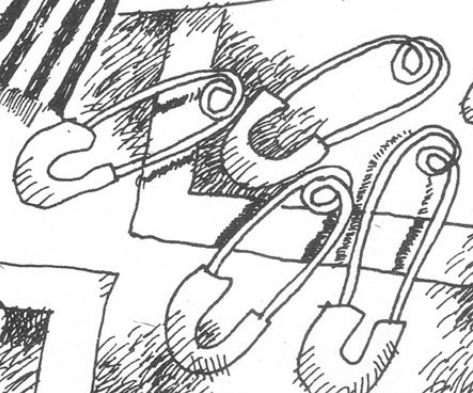
GOODAH!

**RUDY
DE LEON**
3RD PLACE
STILL LIFE
PICTURE
OF THE
MONTH



BIEN S. BAUTISTA

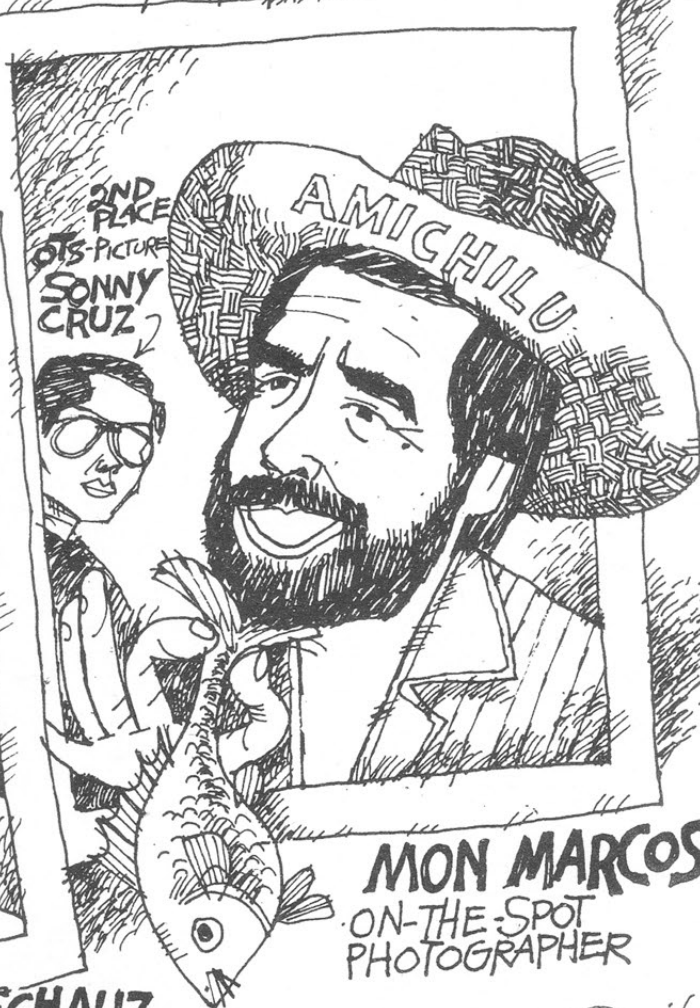
1ST PLACE
PICTURE OF
THE MONTH
'STILL LIFE'



PRESIDENT
ERNIE FAJARDO
1ST PLACE OTS-PICTURE



JUDES ECHAUZ
3RD PLACE/OTS-PICTURE



2ND PLACE
OTS-PICTURE
SONNY CRUZ

AMICHILU

MON MARCOS
ON-THE-SPOT
PHOTOGRAPHER

*Smil
V. Davoco*